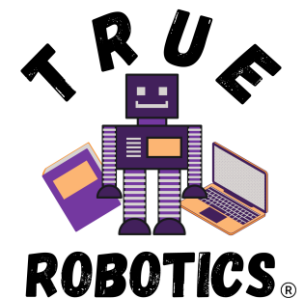
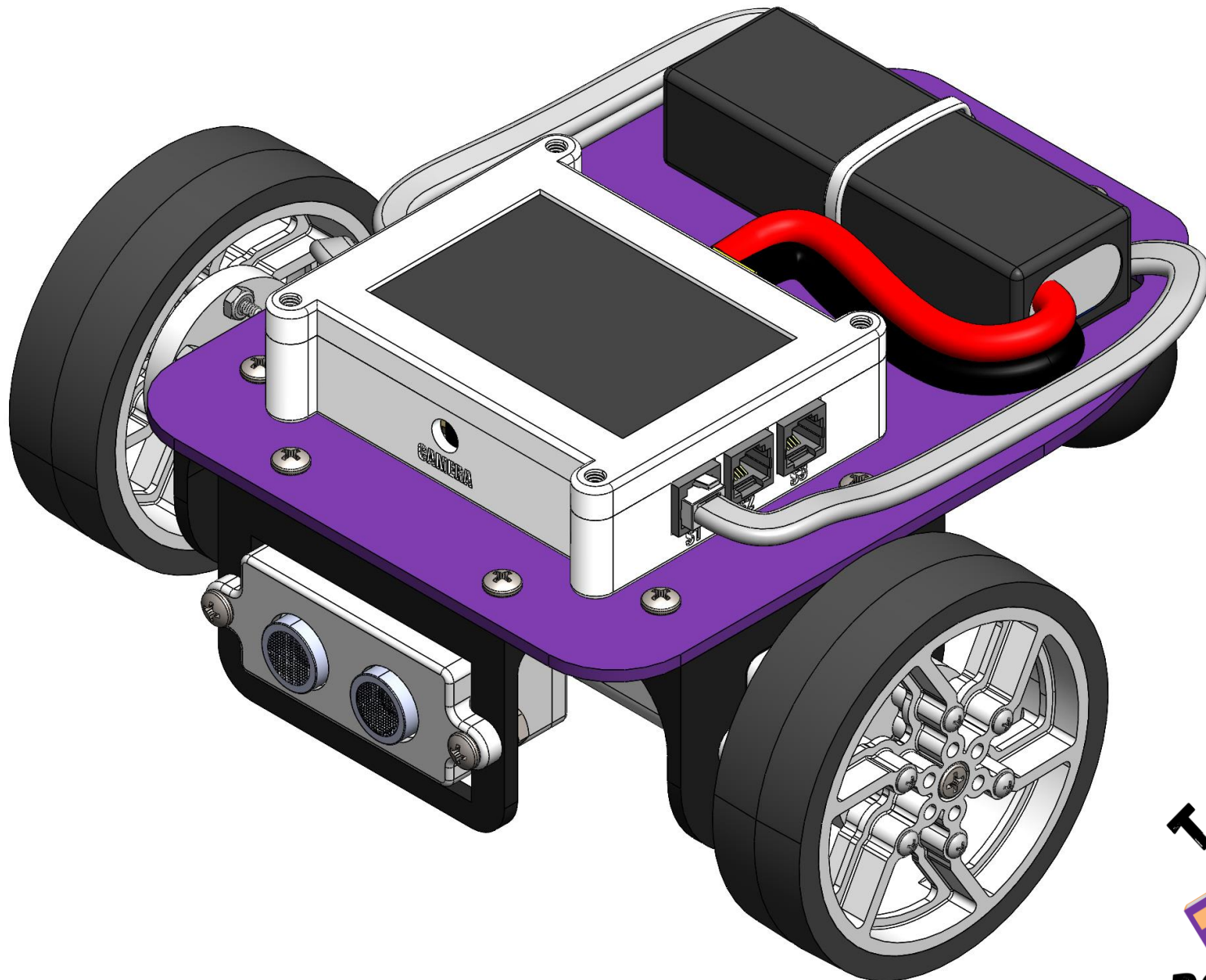
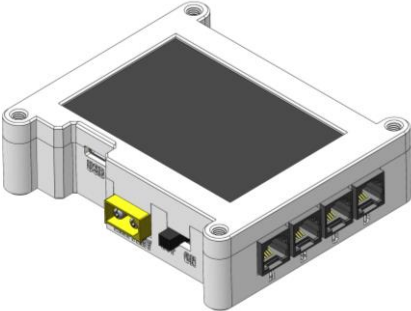

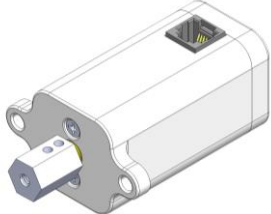
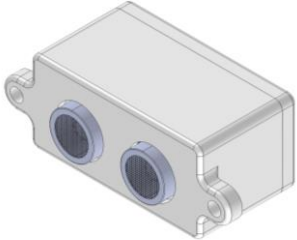

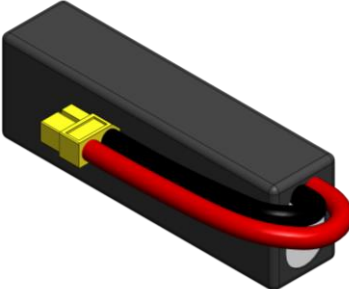


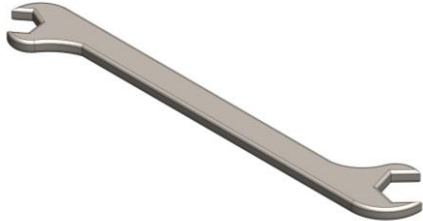


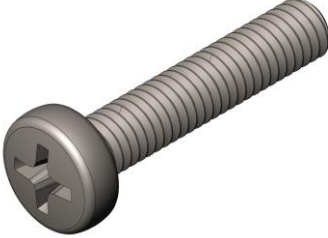



ASSEMBLY INSTRUCTIONS: PILOT

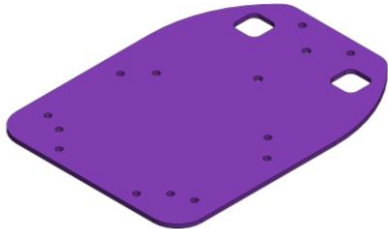


1	CONTROLLER [C]	
2	USB C CORD [USBC]	
3	MOTOR [M]	
4	ULTRASONIC SENSOR [US]	

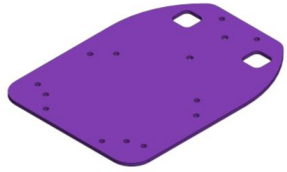
5	WIRE [WR]	
6	BATTERY [B]	
7	BATTERY CHARGER [BC]	
8	SCREWDRIVER [SD]	

9	OPEN WRENCH [OW]	
10	ALLEN KEY [AK]	
11	8-32 0.5" PHILIPS SCREW [S1]	
12	M4 SCREW 20MM [S2]	

13	8-32 STAR NUT [N1]	
14	BACK PEG [PG]	
15	MOTOR MOUNT [MM]	
16	ULTRASONIC MOUNT [UM]	

17	BASE PLATE [BP]	
18	ZIP TIE [ZT]	
19	TRACTION WHEEL [TT]	

[BP]



x1

[PG]



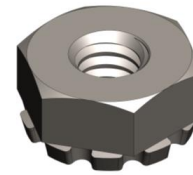
x1

[S1]



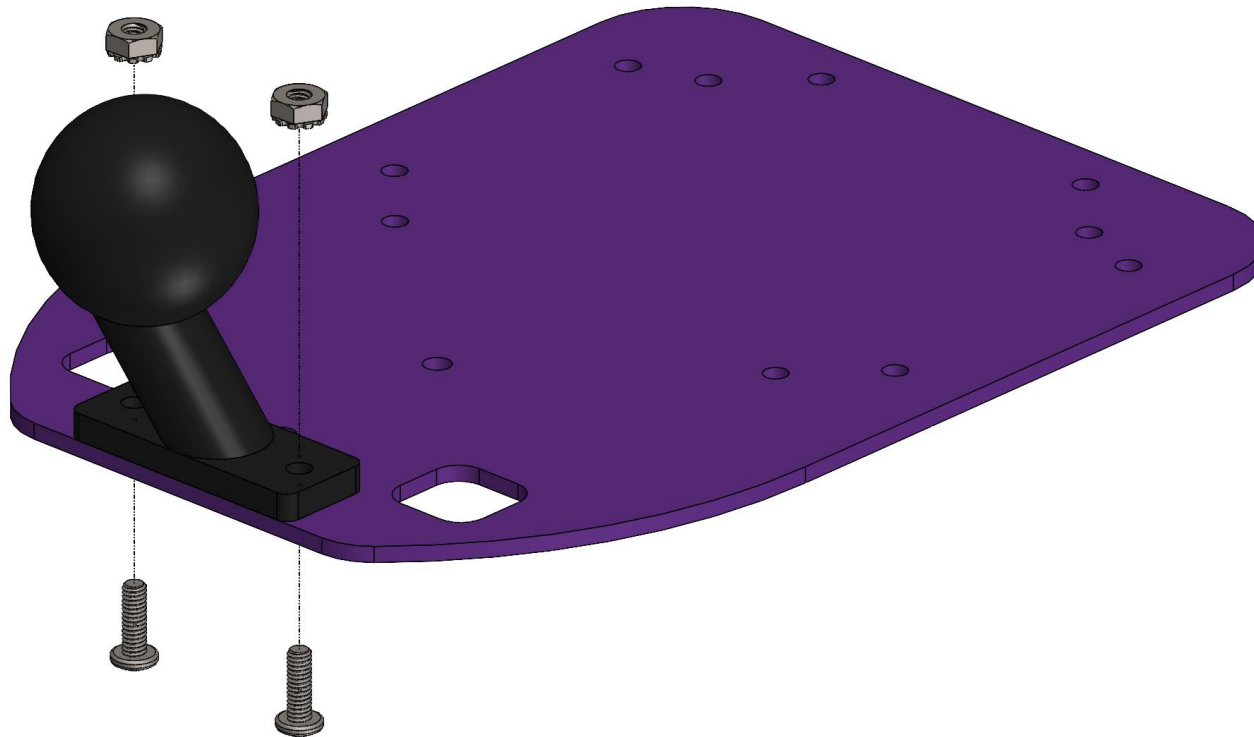
x2

[N1]



x2

1



[UM]



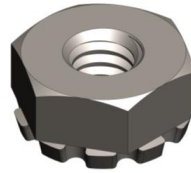
x1

[S1]



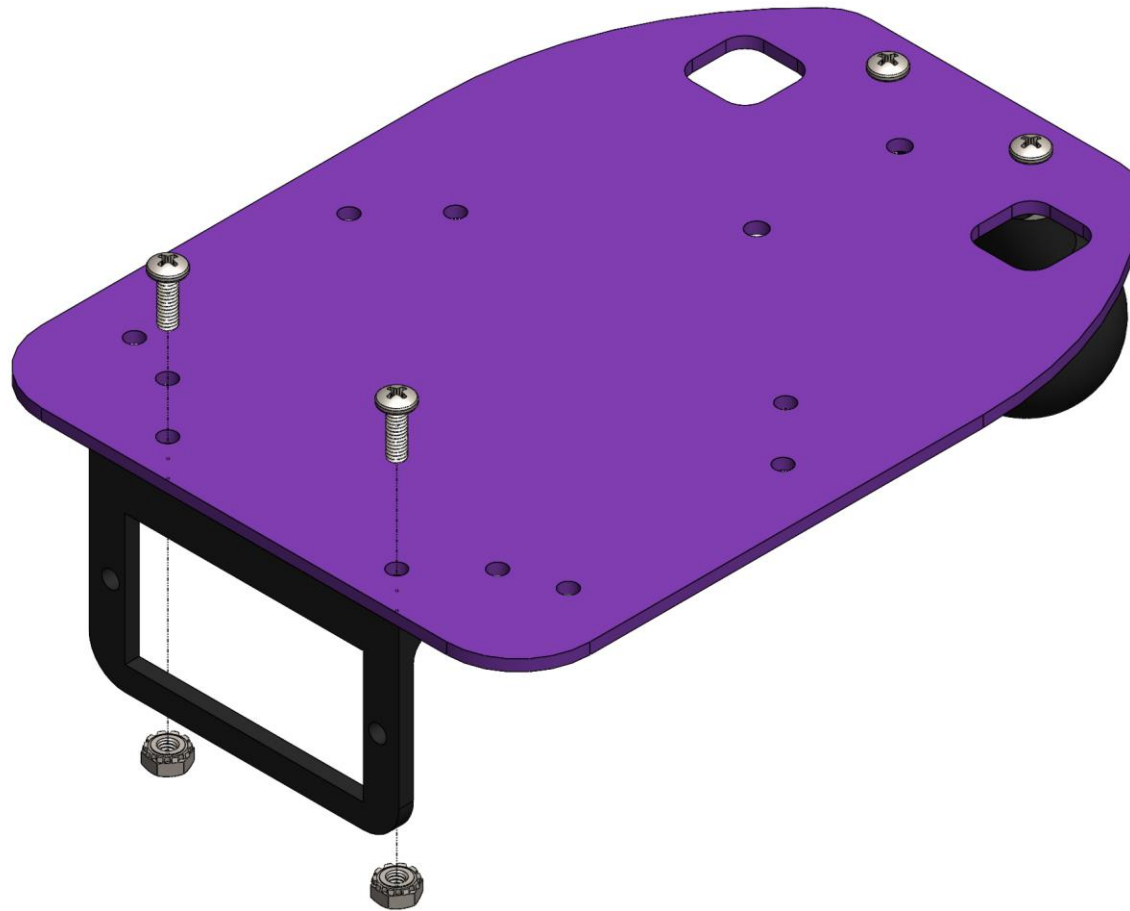
x2

[N1]

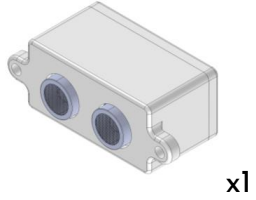


x2

2



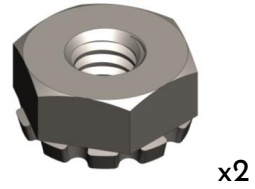
[US]



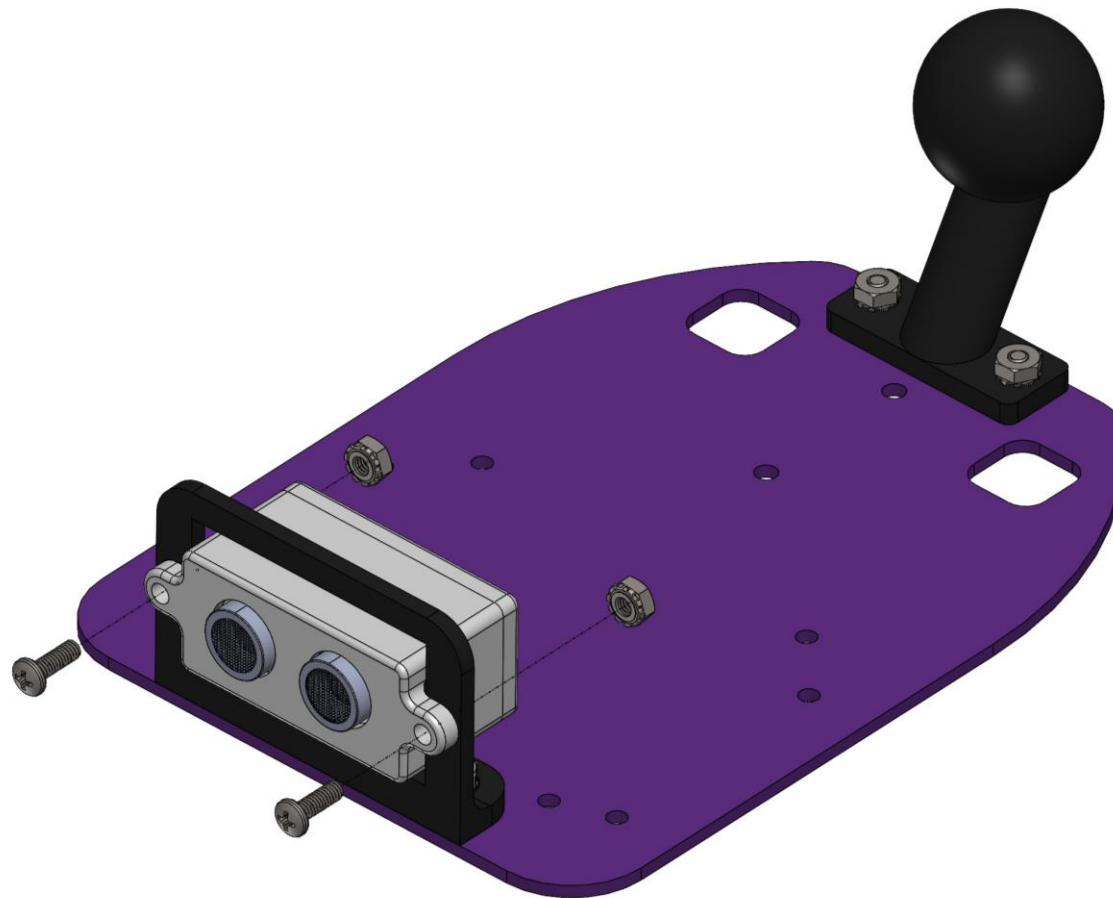
[S1]



[N1]



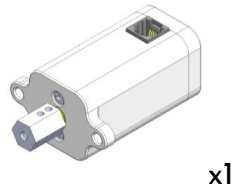
3



[MM]



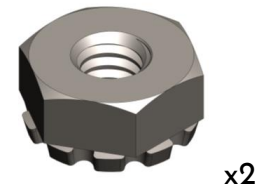
[M]



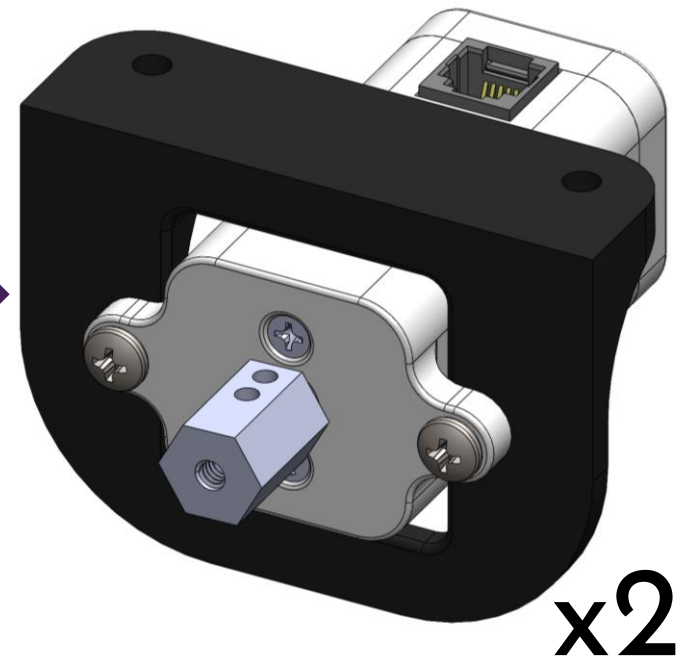
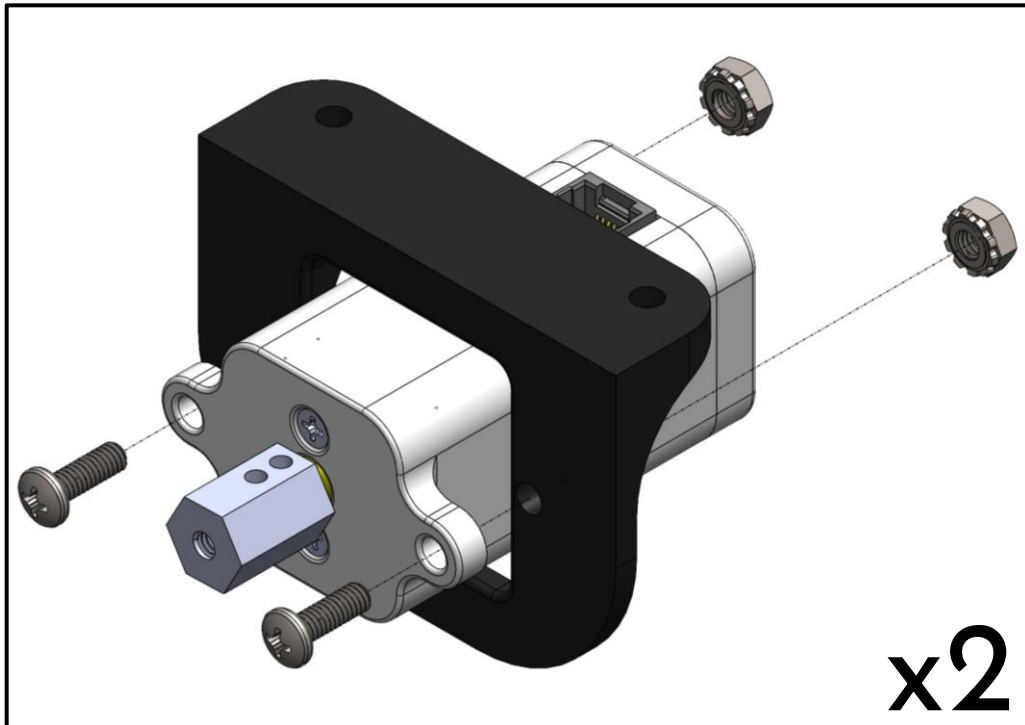
[S1]



[N1]



4

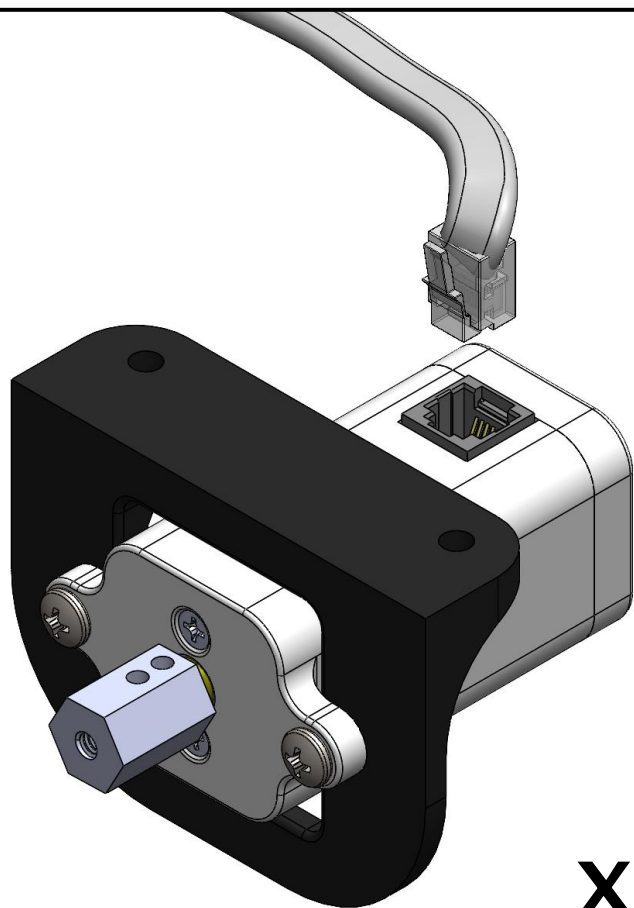


[WR]



x2

5



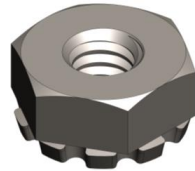
x2

[S1]



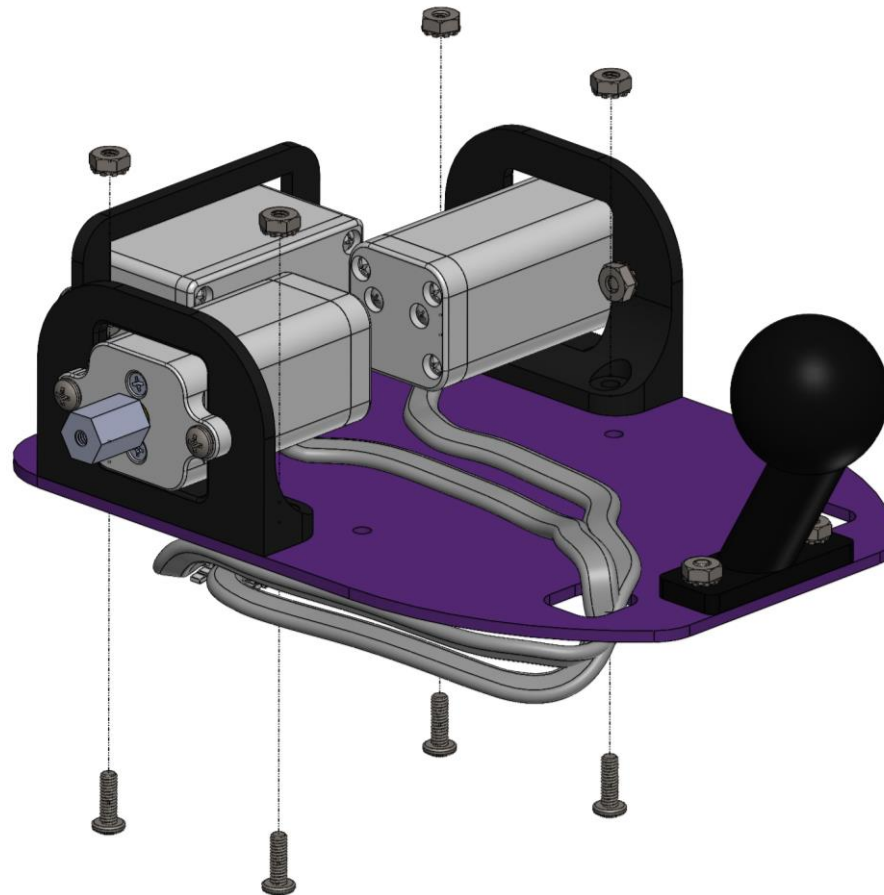
x4

[N1]



x4

6

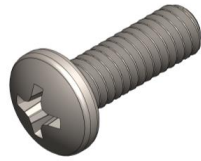


[C]



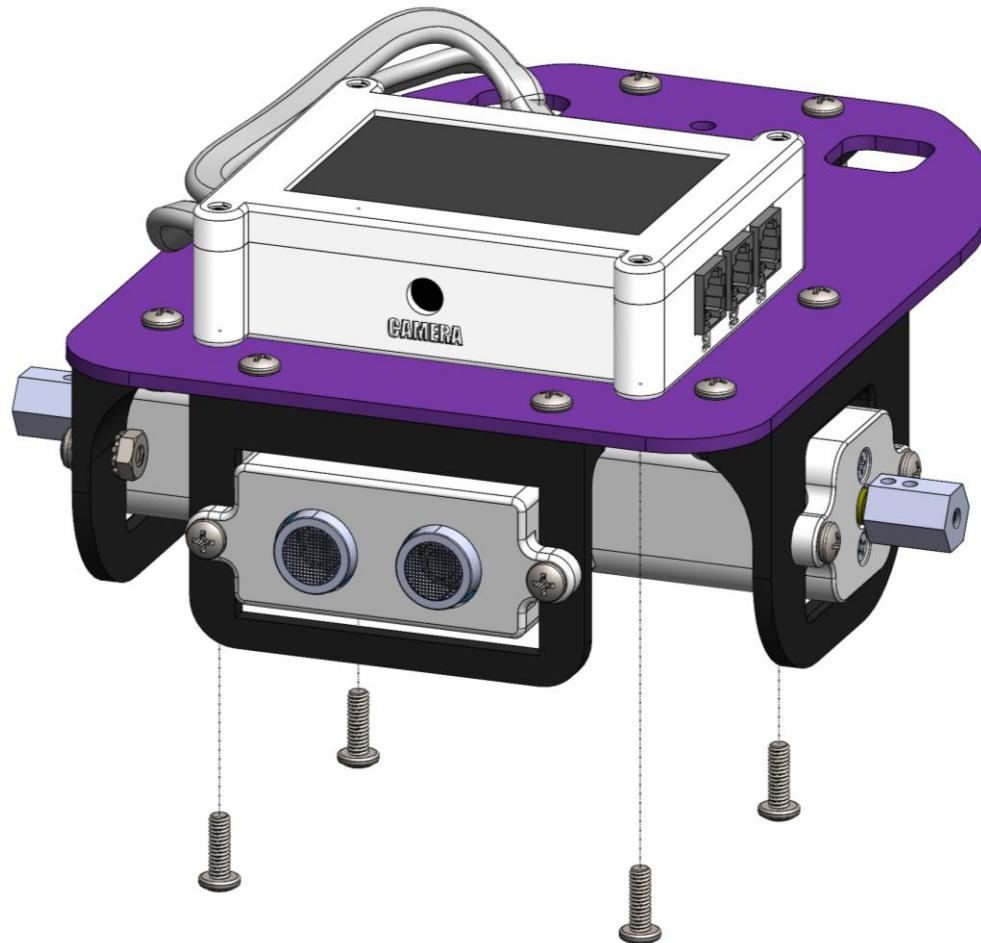
x1

[S1]

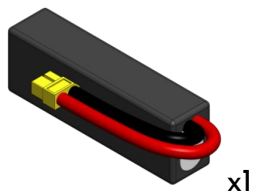


x4

7



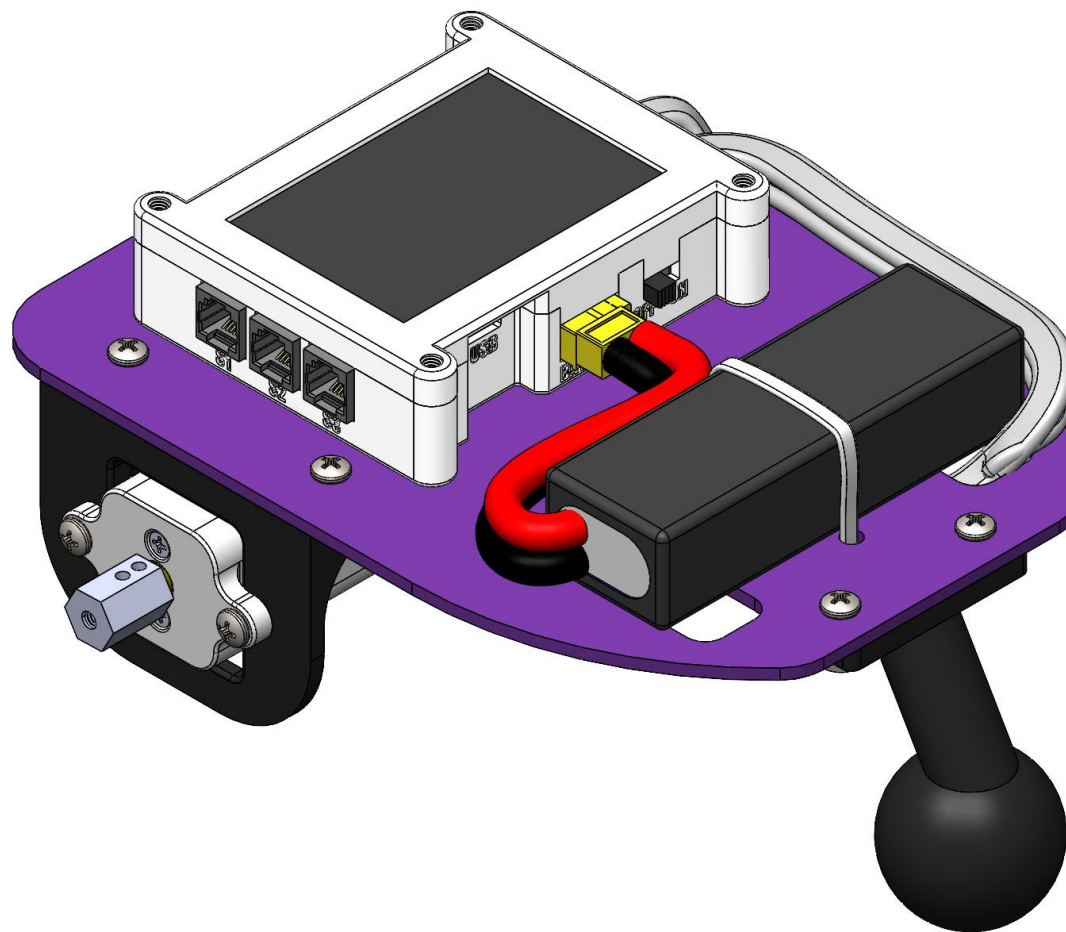
[B]



[ZT]



8

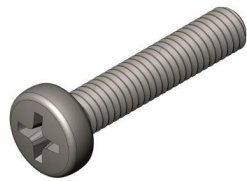


[TT]



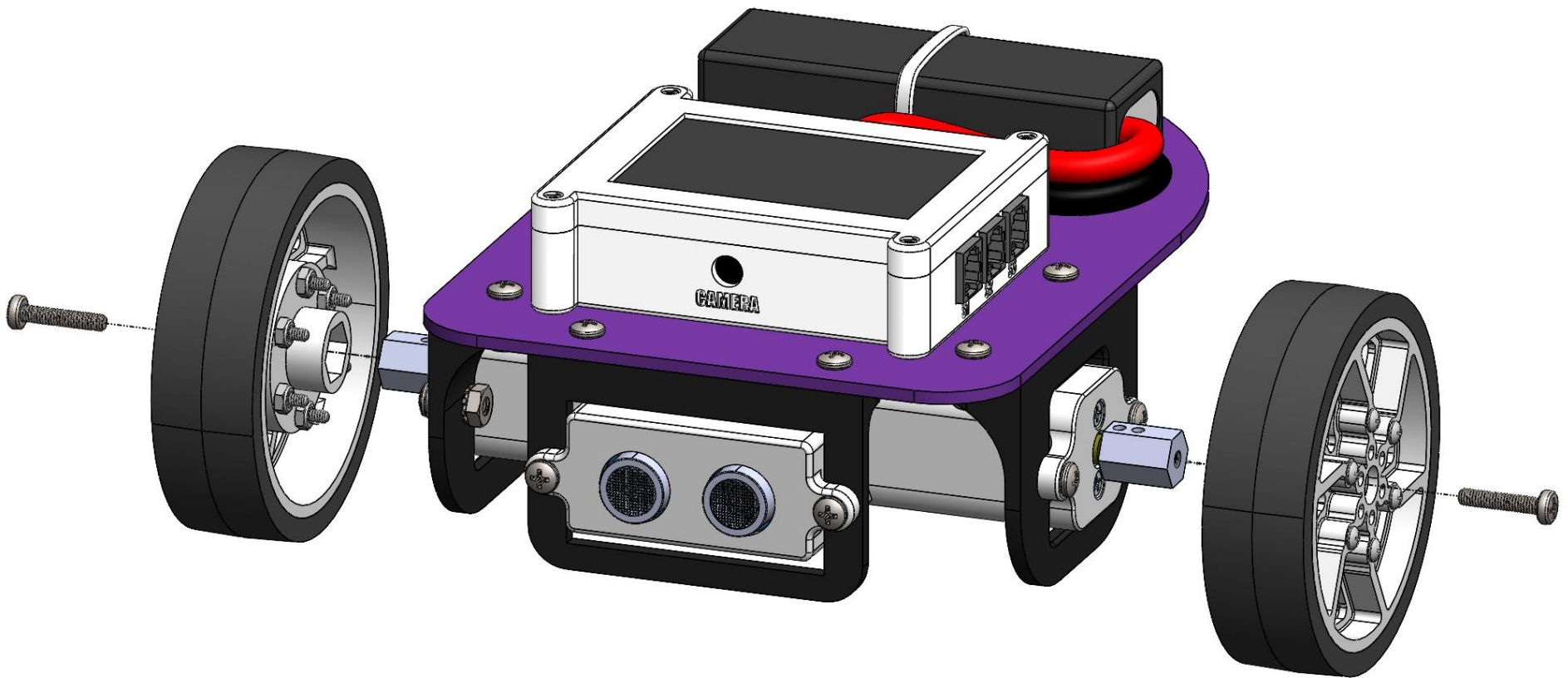
x2

[S2]



x2

9



[WR]



x1

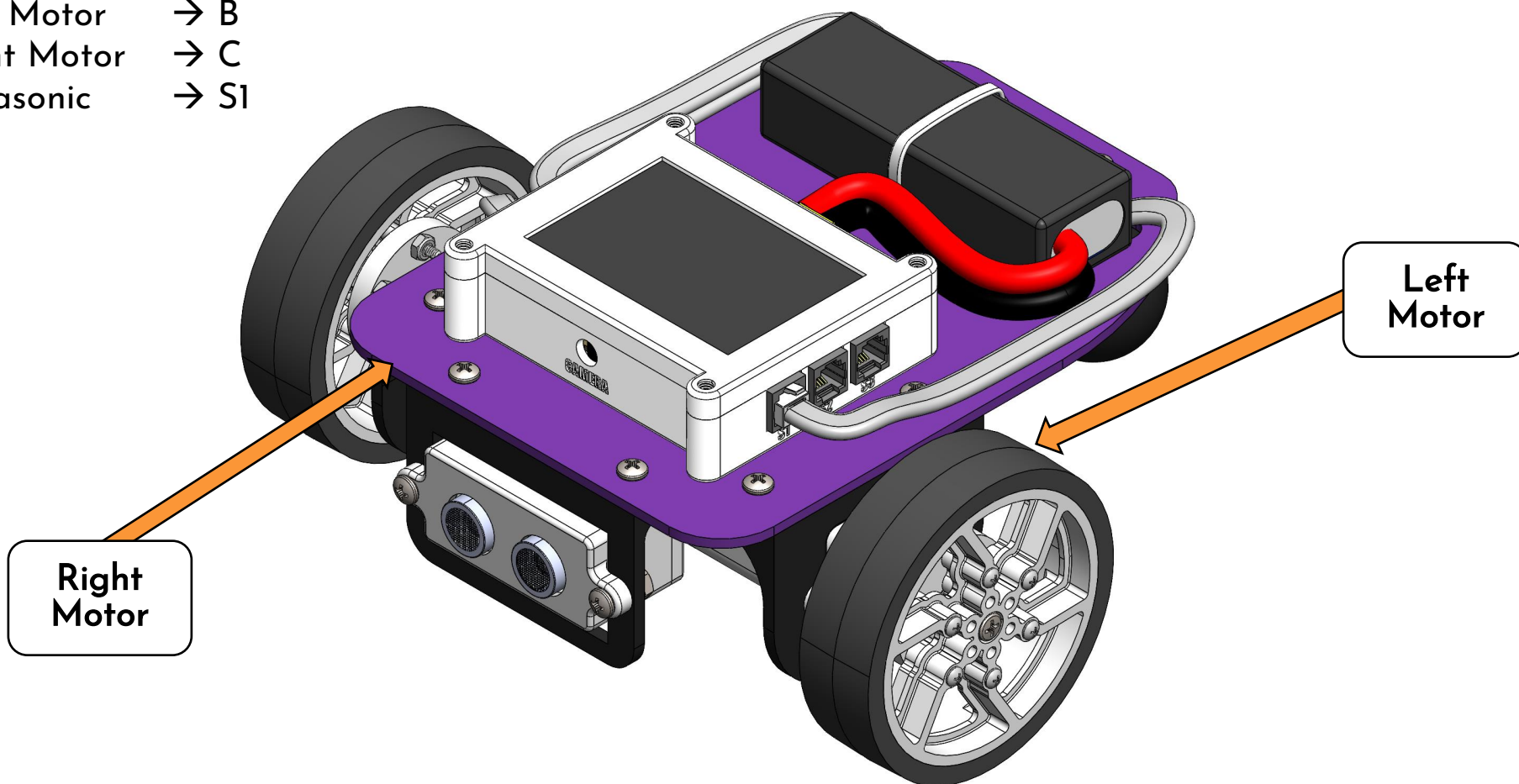
10

Wire Connections

Left Motor → B

Right Motor → C

Ultrasonic → S1



Right
Motor

Left
Motor

